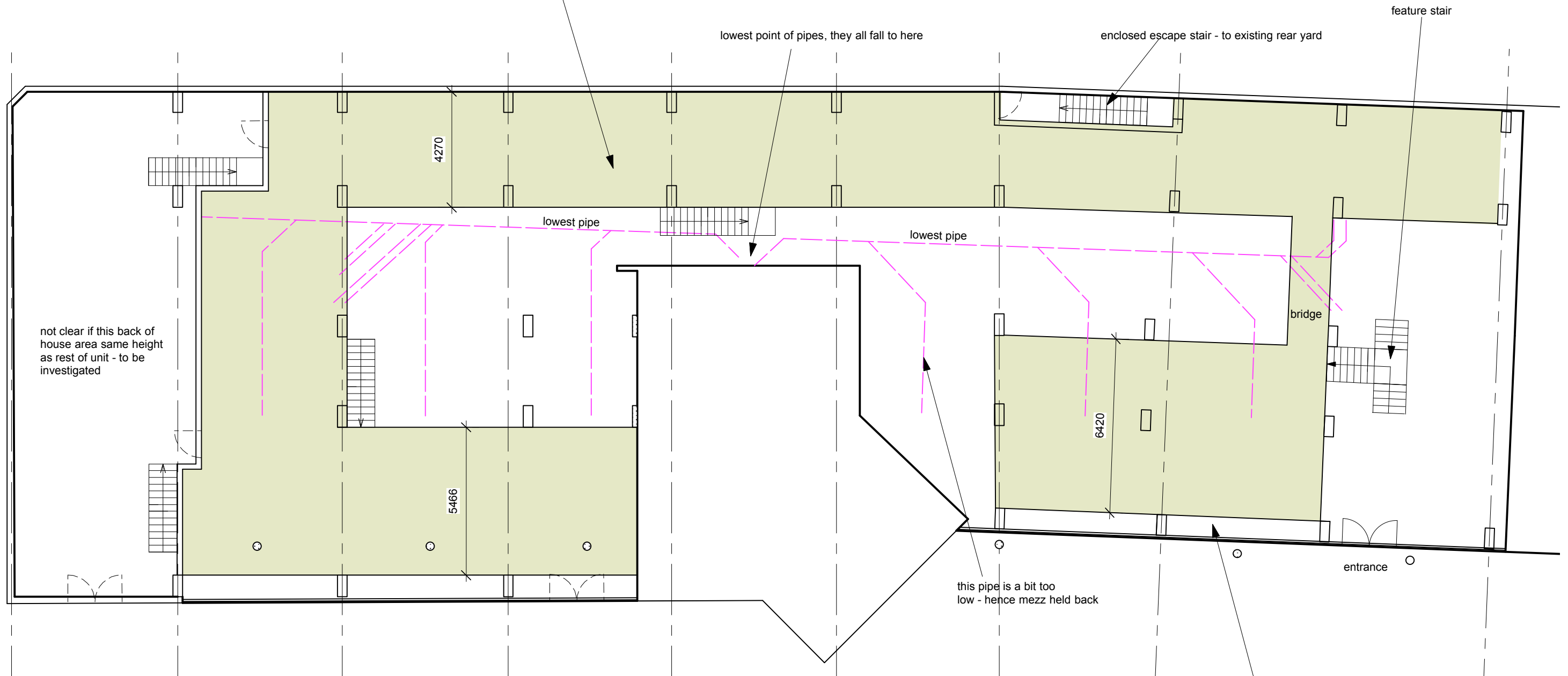
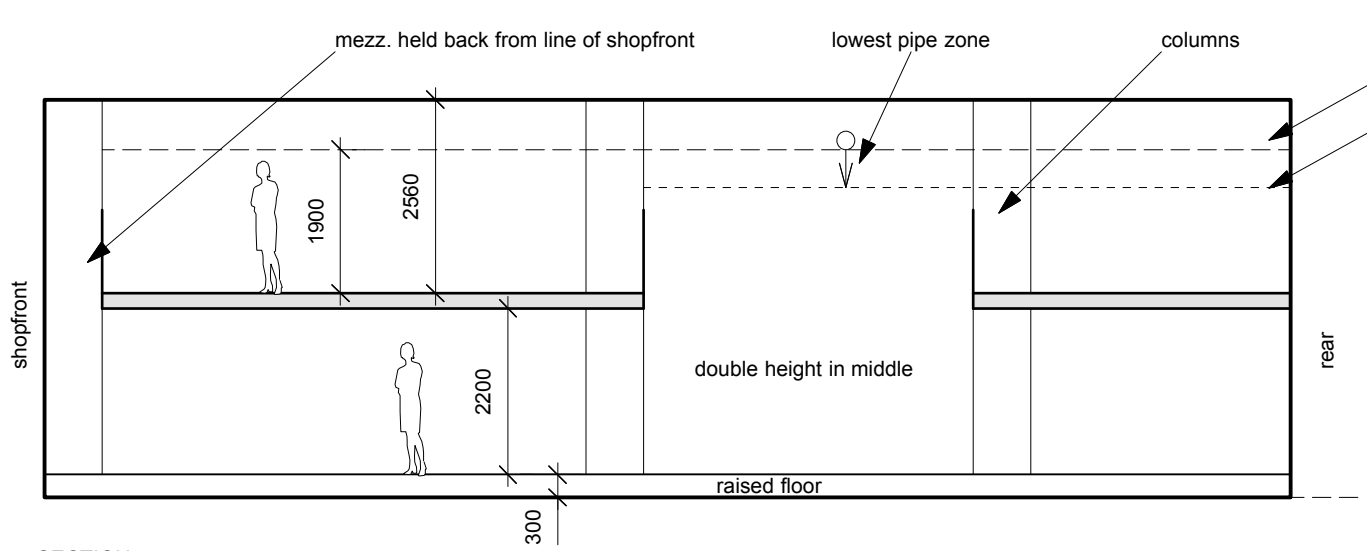


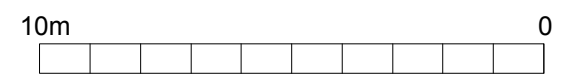
MEZZANINE AREA (GREEN) - all other areas double height up to existing concrete soffit  
 Area Approx. 408m<sup>2</sup> / 4390 ft<sup>2</sup>




mezz. held back from line of shopfront



lowest point of services where there is a mezzanine  
 lowest point of services in unit



status	info
revisions	
X	XXXXX

ARCHITECTS	
25 Links Yard, Spelman St, London E1 5LX tel 020 7539 3686 fax 020 7539 3687 mail@featherstoneyoung.com www.featherstoneyoung.com	
	
job <b>Refurbishment</b>	
address <b>7 Hornsey St</b>	
dwg title <b>Mezz Plan BG 4-6</b>	
scale <b>1:150/A3</b> date <b>MONTH YEAR</b>	

**Notes:**  
 1. Do not scale from this drawing.  
 2. All dimensions to be checked on site by contractor and such dimensions to be his responsibility.  
 3. Report all drawing errors and omissions to the architect.

<b>EGE</b> job reference	<b>SK220411</b> drawing number	- revision
-----------------------------	-----------------------------------	---------------

SECTION